

STATUS Pass Fail



200 Point Inspection

Body Exterior

Interior Checks

Electrical Controls

Engine Compartment

Fuel/Exhaust/Underbody

Drivetrain

Tyres & Wheels

Front Suspension/Steering

Rear Suspension

Brake System

Road Test and Final Check

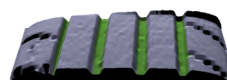
Car Details

Car:



Tyre Tread Readings

Left Front



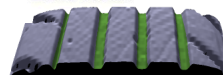
6.9 | 6.8 | 6.5 | 7.1mm

Right Front



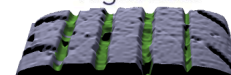
6.7 | 6.9 | 6.8 | 6.7mm

Left Rear



6.9 | 7.2 | 6.8 | 7.4mm

Right Rear



6.9 | 7.7 | 7.1 | 7.3mm

Your Inspection was conducted by

BD

Inspection Site

Cannock Prep

Inspection Date

28/4/26

Registration Number

CX23 LVF

Make

SEAT

Model

ATECA

VIN

VSSZ*****

Mileage

32,778

Colour

Blue

Engine Type

Petrol

Evidence of Accident Damage

Yes

No

The checks enclosed within this document have been carried out on your vehicle by our trained Technicians.

Vehicle checks are passed based on visual inspection for operational and roadworthiness at the time of inspection. Items are checked only where applicable to the vehicle type.

Body Exterior

Pass Fail

Body Exterior

Panel Condition

Exterior Trim

Bumpers Number Plates

Panoramic Roof Condition

Wiper Blade Condition

Keys/Doors/Locks

Paintwork

Fuel Filler

Convertible Hood & Sunroof Condition

Windscreen and Glass

Engine Compartment

Pass Fail

Battery Test Percentage (%)

Check Service - Oil and Filter

Engine Oil Level & Leaks

Coolant Level & Leaks

Antifreeze Concentration

Automatic Transmission Fluid

Radiator Pressure Cap

Water Pump

Coolant Hoses/Pipes/Connections

Brake Fluid Level & Leaks

Power Steering Fluid Level & Leaks

Washer Fluid Level & Leaks

Clutch Fluid Level & Leaks

Timing Belt Condition

Timing Chain Condition

Aux Belt Condition

Engine Mounts

AC Compressor/Components

Bonnet Catch/Bonnet Hinges

Fuel Pump/Line Connections

Fuel Injection System/Carburettor

Cold Starting

Excessive Fumes/Smoke

Engine Noise Level

Turbo/Supercharger

Throttle Linkage

Electrical Controls

Pass Fail

Starting System/Ignition Lock

Battery Charging System

Headlamps Side Lights/Running Lights

Indicators/Hazard lights

Mirror Side Repeaters

No Plate Lamps

Front Fog Lamps

Rear Fog Lamps

Brake Lights

High Level Brake Light

Rear Lights

Reverse Lights

Front Parking Sensors

Rear Parking Sensors

Door locks/Central Locking

Luggage Area Self Opening/Closing

Charging Port/Operation

Convertible Hood & Sunroof Operation

In Car Entertainment

Satellite Navigation

External Aerial

Door Puddles Lights

Mirrors Operation/Folding

Horn

Switches/Controls

Instruments/Functions

Interior Illumination

Sunvisor Mirrors/Illumination

Cigar lighter

12 Volt Sockets

Phone Charging Mat

USB Sockets

Front and Rear Heated Screens

Heated Mirrors

Heated Steering Wheel

Heated Seat Operation

Electric Seat Operation

Air Conditioning Seat Operation

Air Conditioning Operation

Heating Fan/Operation

Washers Wipers

Headlamp Wash/Wipers

All Window Operations

Rear View Camera Operation

Infotainment Speakers Operation

Interior Checks

Pass Fail

Steering Wheel

Steering Wheel Controls

Seat Mechanisms

Carpet Condition

Door Fittings/Operation

Headlining

All Seat Belts

Rear View Mirror

Seat Upholstery

Door Seals

Door Shut Area's

Parcel Shelf

Bonnet Pull Lever

Dashboard (Condition)

Air Vent Operation

Door Trim Panels

Glove Box

Battery Charge Cables Present

Keys, Door Locks and Handles Operation

Tool Kit/Inflation kit

Bonnet Closure Latch and Cable

Luggage Area

Soft Materials

Front Suspension/Steering

Pass Fail

Steering Joints/Ball Joints

Shock Absorbers/Dampers

Road Springs/Suspension units

Self Levelling Suspension

Bump Stops

Hoses/Pipes

Gaiters

Steering Rack/Box

Power Steering Operation

Wheel Hubs/Bearings

Suspension Arms/Links/Mountings

Subframe Condition/Mountings

Tie Bars/Anti Roll bars

Rear Suspension

Pass Fail

Road Springs/Suspension units

Self Levelling Suspension

Bump Stops

Hoses/Pipes

Subframe Condition/Mountings

Wheel Hubs/Bearings

Tie Bars/Anti Roll bars

Shock Absorbers/Dampers

Suspension Arms/Links/Mountings

Gaiters

Drivetrain

Pass Fail

Casings

Cable Adjustments

Linkages

Drive Shaft Assemblies

Propshaft and Universal Joints

Fluid Leaks

Hydraulic Systems

Mountings

Gaiters

Tyres & Wheels

Pass Fail

OSF Tyre Condition

NSF Tyre Condition

OSR Tyre Condition

NSR Tyre Condition

Spare Tyre Condition

Set Correct Tyre Pressures

Torque Wheels to Manufacturer's Specification

OSF Wheel Condition

NSF Wheel Condition

OSR Wheel Condition

NSR Wheel Condition

Spare Wheel Condition

Wheel Trims

Fuel/Exhaust/Underbody

Pass Fail

CAT Present

DPF/OPF Present

Exhaust Manifold

Smoke from Exhaust

Chassis Members/Floor Pan

Fuel Tank condition

Fuel Tank Mountings

Evidence of Accident Damage

Centre Pipe and Silencers

Back Box and Silencers

Heat Shields/Mountings

Corrosion Protection

Evidence of Corrosion

Fuel Tank Breathers

Fuel filler Cap/Filler Flap

Evidence of fuel Leaks

Brake System

Pass Fail

Master Cylinder

Fluid Leaks

Brake Flexible hoses

Hand Brake/Parking Brake Linkage

Hand Brake/Parking Brake Adjustment

Servo/Power Brakes System

Brake Pedal Linkage

Brake Pedal Rubber

Brake Line Condition/Connections

Caliper Movement and Condition

Front Discs Condition

Front Pads Condition

Rear Discs Condition

Rear Pads Condition

Rear Linings Condition

Rear wheel Cylinders Condition

Rear Brake Drums condition

Road Test and Final Checks

Pass Fail

Engine Operation, Performance, Idle

Braking Performance, Vibration, Effort

Suspension Noises

Transmission Noise and Operation

Hand Brake/Parking Brake Operation

Dashboard Warning Lights

Instruments/Controls Function

Cooling Fan Operation/Evidence of Overheating

Check for fluid Leaks

Excessive Smoke

Engine Noise

Hot Restarting

4WD Operation

Clutch Operation

Auto Change/Kick Down

Cruise Control

Final Drive Operation/Noise

Road Holding/Handling

Steering Wheel Alignment

Steering Handling

Tyre Noise or Vibration

Driving Noise/Wind Noise

Check and Clear Fault Codes